




ENOVUS LABS



www.enovuslabs.com
info@enovuslabs.com



WE **INNOVATE** TO CREATE
THERMOMECHANICAL SOLUTIONS
FOR **CHALLENGING** APPLICATIONS.



Formed by Brian Donnelly and Nick Jeffers, Enovus Labs was created specifically to innovate and **solve challenging thermal and mechanical problems**. Between them, they have over 30 years' engineering experience coupled with the ability to invent disruptive technologies and the relentless drive to deliver on them.



www.linkedin.com/in/b-donnelly
www.linkedin.com/in/nick-jeffers

CAPABILITIES

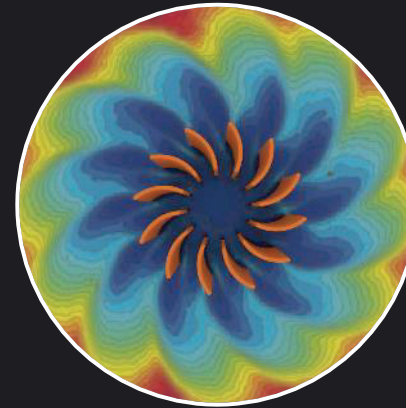
Our world-class lab
has everything
required to rapidly
design, build and test
innovative solutions.

DESIGN



- CAD modelling & rendering
- CNC machining
- 3D printing
- Prototyping

ANALYSE



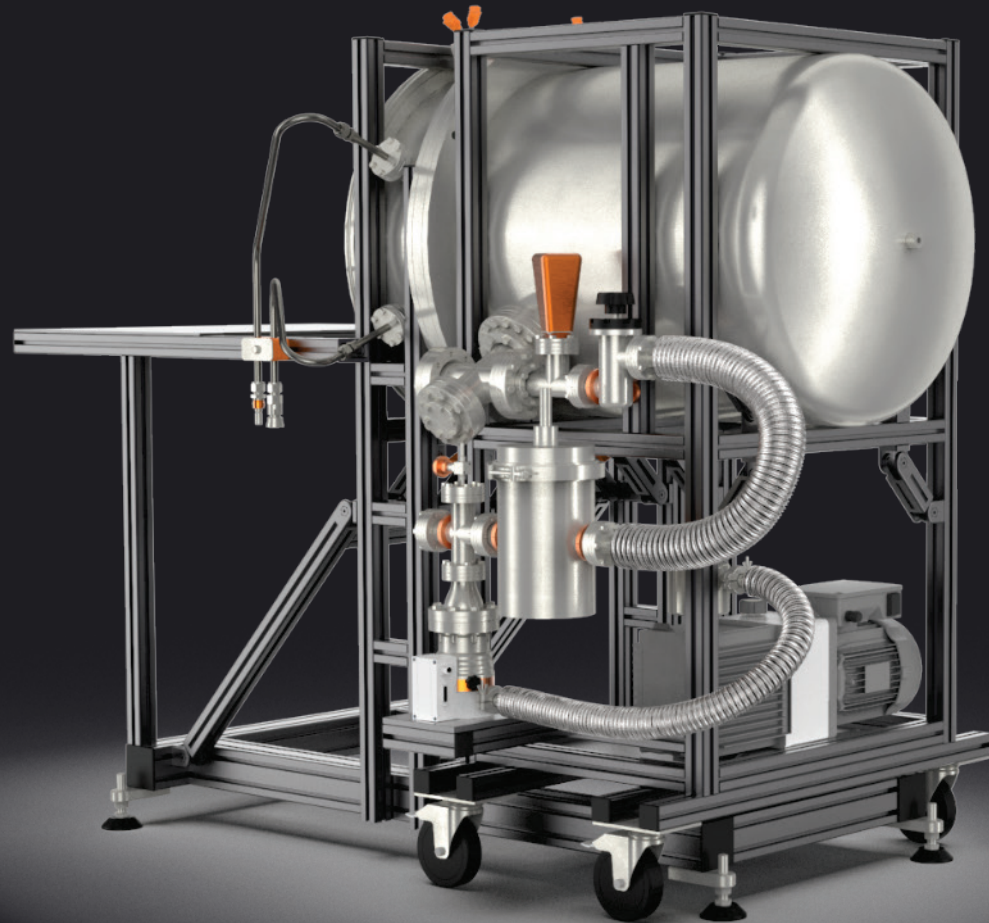
- Mechanical simulation
- Thermal simulation (terrestrial and space)
- Data analysis software

TEST



- TVAC chamber
- Heated wind tunnel
- PIV fluid flow
- IR Thermography
- DAQ and analysis

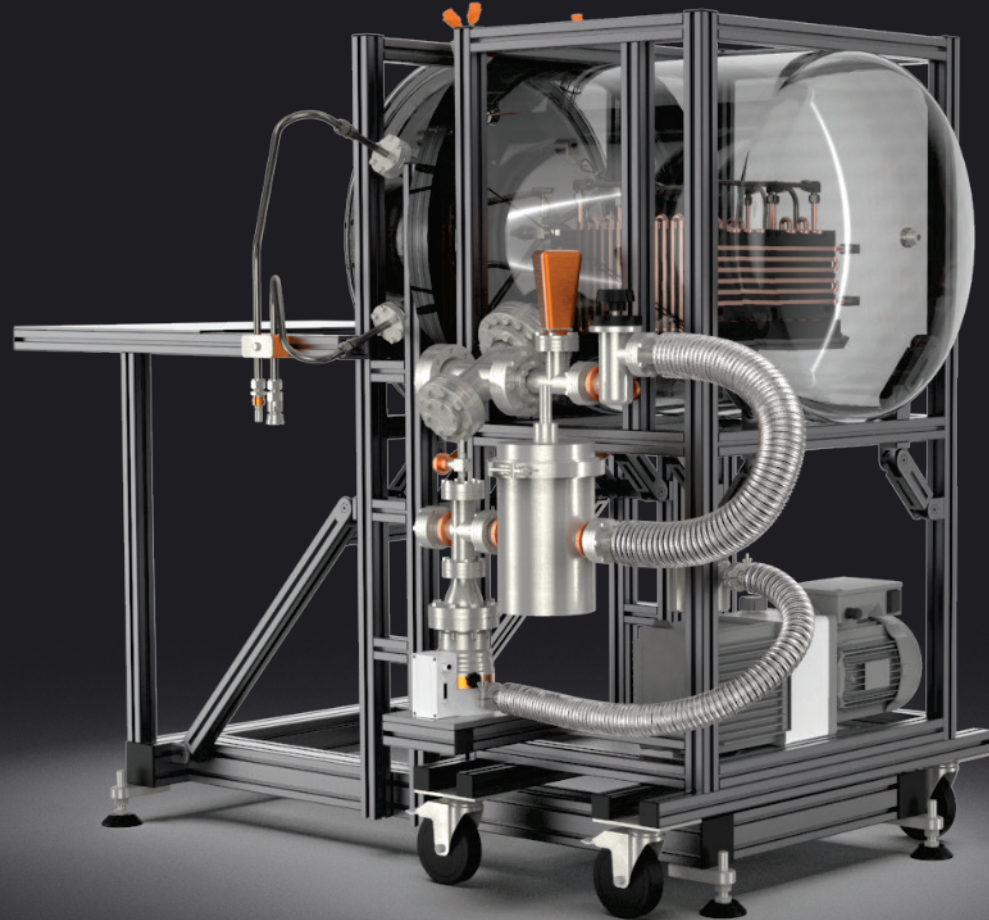
TVAC CHAMBER



INTERFACE

- 20 K-type thermocouples
- 8 SMA coaxial connectors
- 2 55A 5kV high power connectors
- 4 25 pin D-sub connectors (max 500V 5A)
- 4 0.5in fluid inlets for cold plates

TVAC CHAMBER



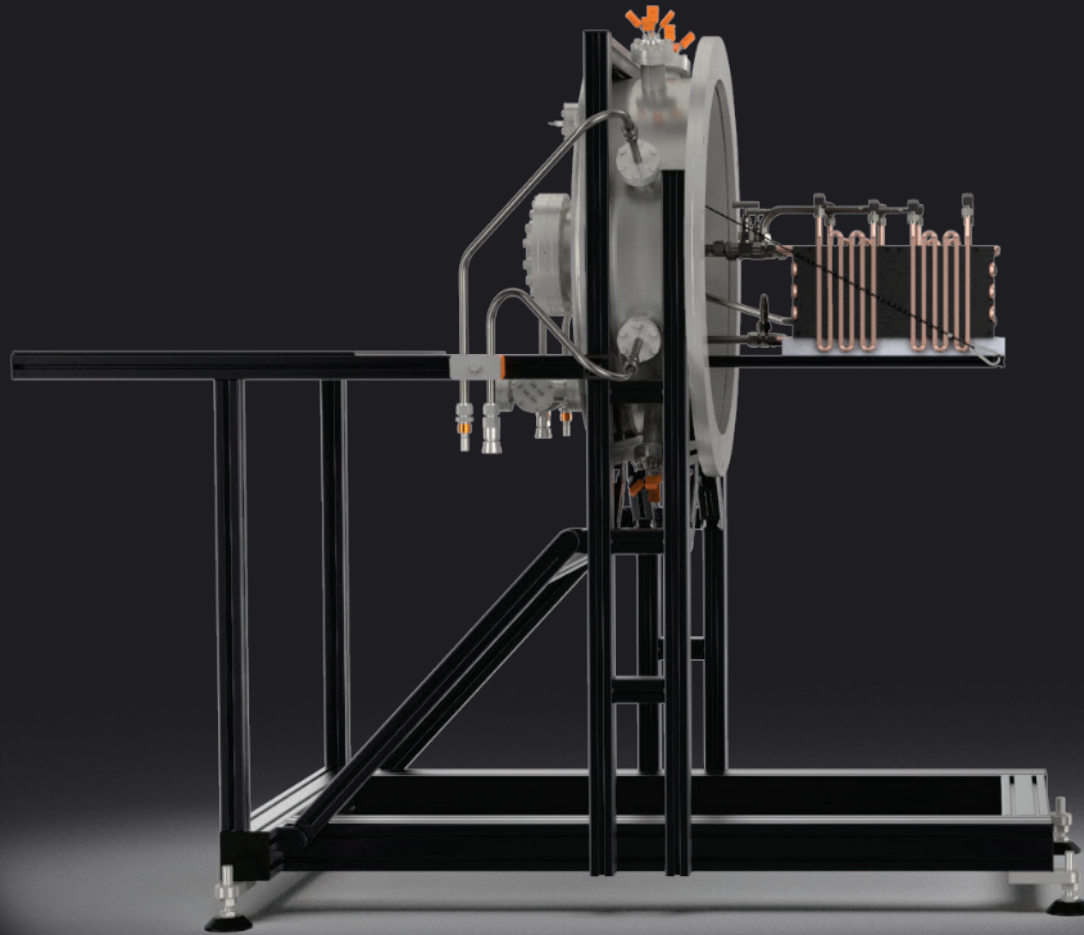
PERFORMANCE

- 1×10^{-6} mbar chamber pressure
- 2 independently controlled cold plates
-20°C to +90°C min/max range
- Chamber size $\varnothing 600\text{mm} \times 850\text{mm}$

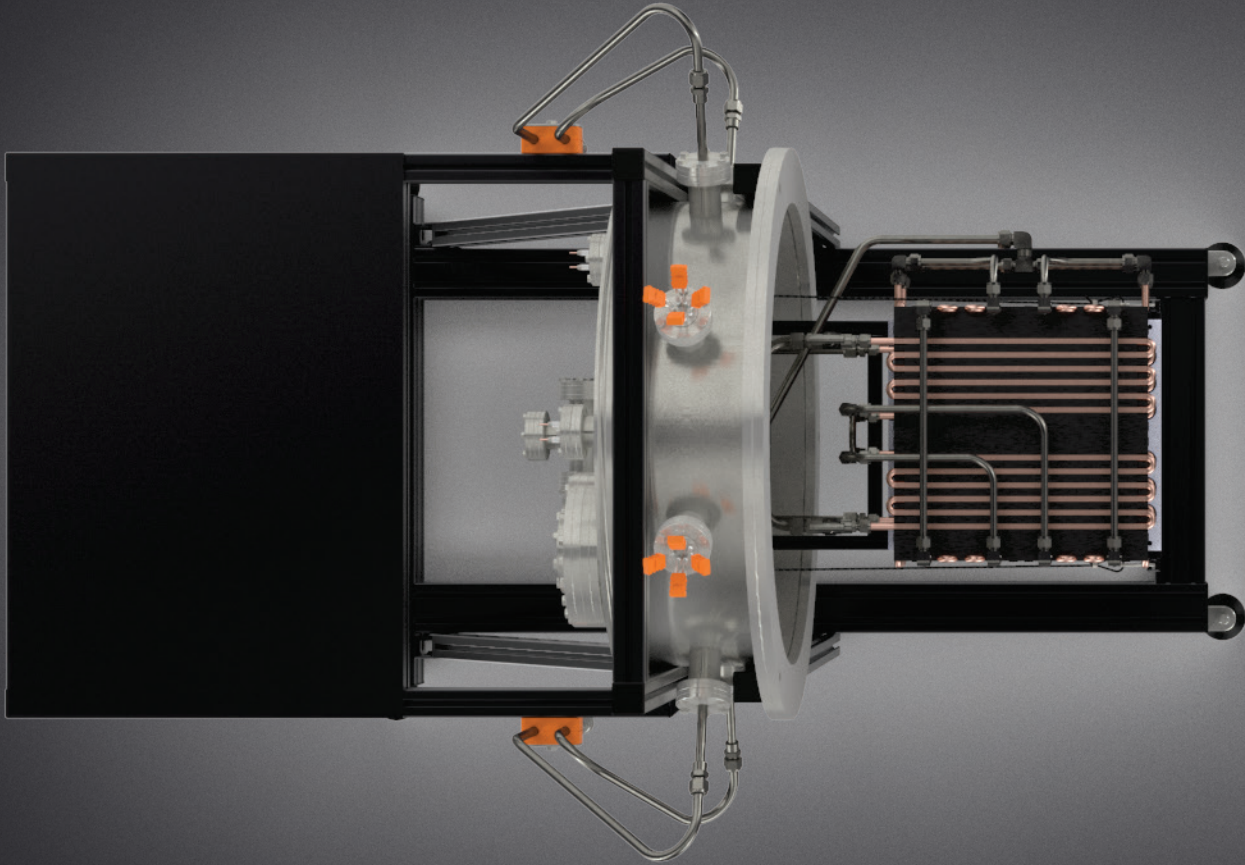
TVAC CHAMBER



TVAC CHAMBER



TVAC CHAMBER



GET IN TOUCH

DON'T HESITATE TO
CONTACT US TO
DISCUSS YOUR NEXT
CHALLENGING PROJECT.

www.enovuslabs.com

info@enovuslabs.com

CAD Modelling



Mechanical Simulation



Experimentation



Prototyping



Thermal Simulation



Data Acquisition and Analysis



Rendering



Research



IP Generation

